



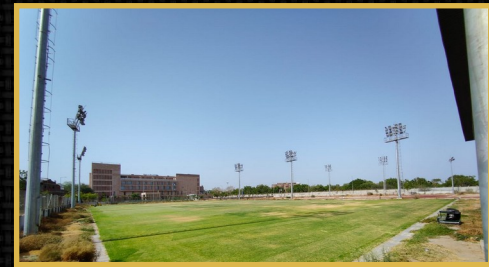
BOTLAB DYNAMICS

LOCATION SURVEY

The location survey takes from five to seven days in common scenarios.

This may take more time in cases where the location is unique or challenging.

for example, if the formation sight is above water, then additional preparation time is required for on-sight calibration and system qualification.



ENVIRONMENT CONSTRAINTS

Launch Site

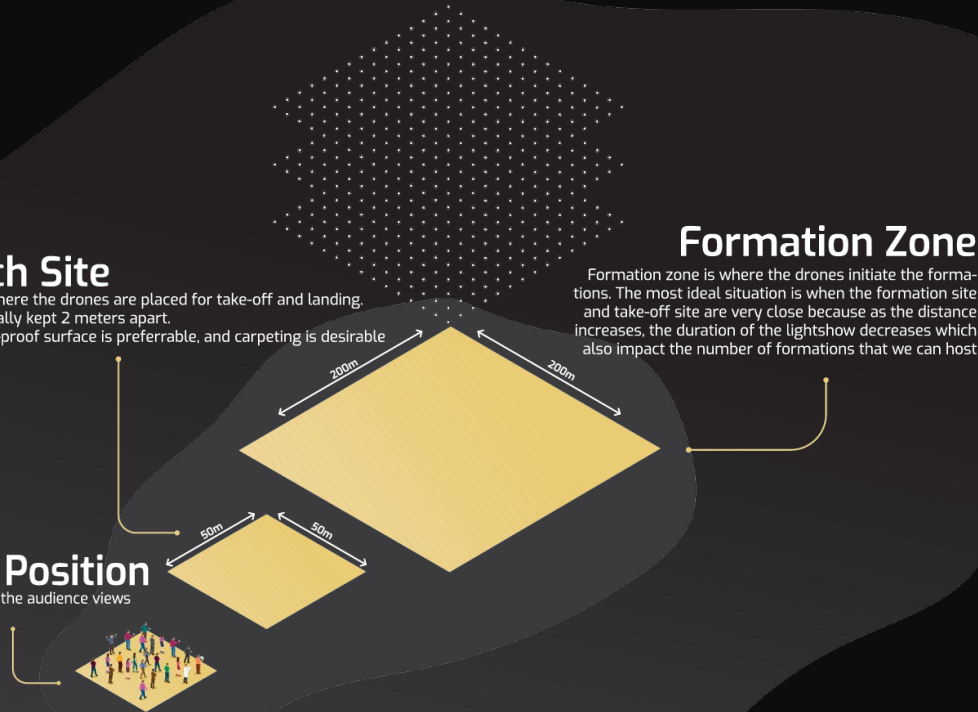
The location where the drones are placed for take-off and landing. Drones are ideally kept 2 meters apart. A flat dry dust-proof surface is preferable, and carpeting is desirable

Formation Zone

Formation zone is where the drones initiate the formations. The most ideal situation is when the formation site and take-off site are very close because as the distance increases, the duration of the lightshow decreases which also impact the number of formations that we can host

Audience Position

The location from where the audience views the drone light show

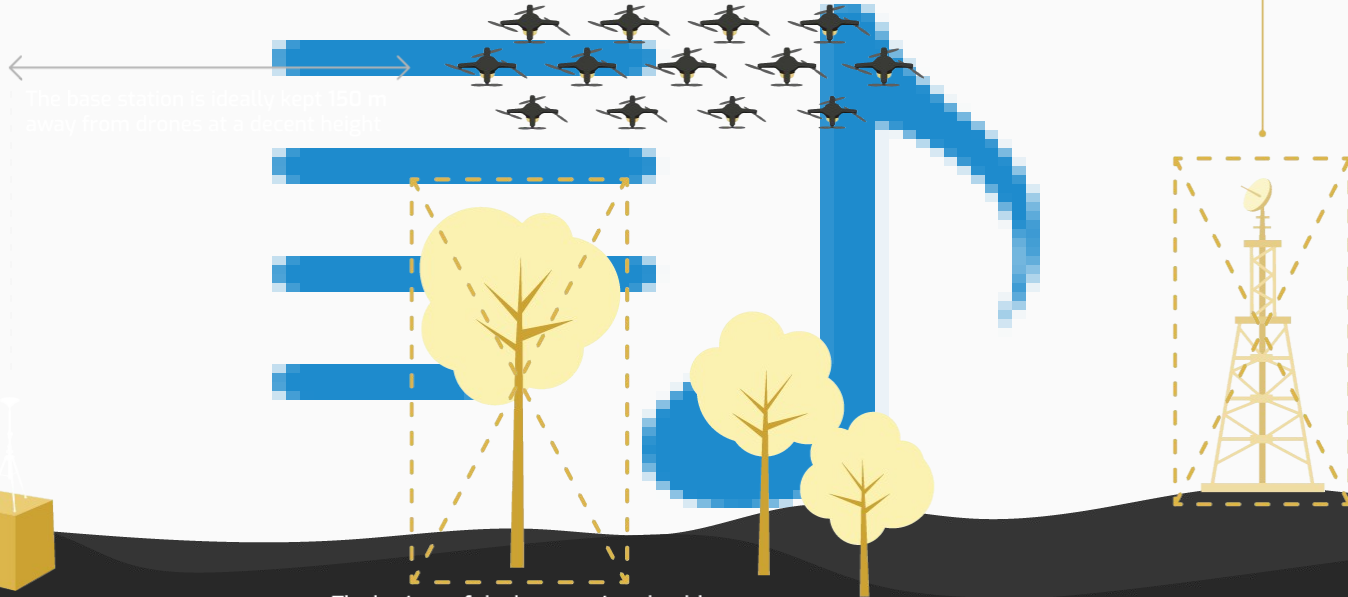


Ideal wind speed should not be more than 5m/sec

A typical drone show is 8-10 mins. and the duration might reduce depending on the temperature and altitude

Flight Zone is finalized after survey from the BotLab team

There should NOT be any possible interferences like JAMMERS for GPS or mobile networks as we require connectivity during the setup process



The base station is ideally kept 150 m away from drones at a decent height

The horizon of the base station should NOT have any obstruction within 20°

P E R M I S S I O N S

Drone light shows are subject to clearing due permissions from the authorized bodies. The permissions are required from either or all of the following authorities depending on the location:

The authorities owning/managing the area of the take-off sight and formation sight

The local authorities

DGCA

Ministry of Home Affairs (MHA)

Nearby Air Traffic Controller (ATC) where applicable

Any other permissions subject to the specific locations (Army for containment area)

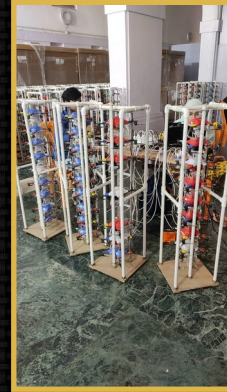
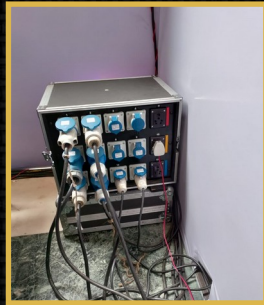
The procedure of procuring a permit varies according to the location. For instance, area under red zone requires additional permissions while green zone areas are comparatively easy to get permissions for.

BotLab will help to identify the most appropriate location to fit the theme of the event and also assist with all the documentations required to procure permissions

LOGISTICS

A storage space is required for the equipment and drones with the following facilities:

- ✦ Min. 1,000 Sq. Ft. for 500 drones
- ✦ Power Supply ~ 5kw
- ✦ Min. 6+ sockets (16A)
- ✦ Appropriate security for the equipment and drones
- ✦ Tables (Min. 6)
- ✦ Chairs (Min. 12)



- ❖ The storage space should be close to the flight site to save on the commute
- ❖ **No unauthorized personnel will be allowed access to the storage space**
- ❖ **BotLab team should be able to access the equipment and drones at anytime**

LOGISTICS

BotLab will indicate the timeline in advance about the arrival of the team and equipment

BotLab should be allowed access to the site for survey and tests whenever needed

In case a storage space is not available, alternative arrangements such as tents/trucks etc. should be arranged along with power supply (extension cords/generator)

Appropriate lighting and air conditioning for the team

Proper internet access should be enabled for the team during the setup and the show

Local transportation for the team's commute from the show site and accommodation

Barricading for keeping the audience to enter the flight zone



T E S T I N G

The final step before the actual show is to conduct tests. Testing is very crucial as it helps us identify any potential challenges that may arise during the drone-lightshow. We recommend at least one week of testing wherein we conduct the following tests:

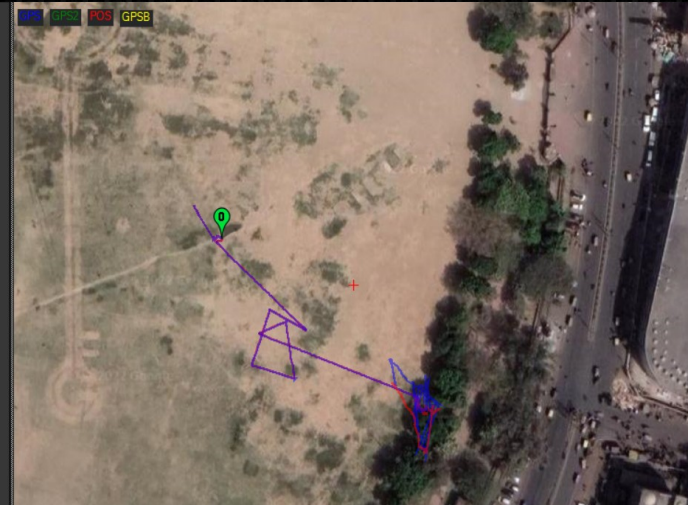
Perimeter drone test to ensure the range and landing site are in check

GPS test to ensure proper signals are accessible at all-time

Geo-Fencing to ensure drones do not leave any designated area/volume

Odd-even Testing to weed out any system that might have any issues

All-up Test



THANK YOU FOR YOUR
TIME!